

THE SAMPLES

BOOK



INDEX

NABUK	p. 02
FULL GRAIN LEATHER	04
TOP GRAIN LEATHER	06
PEARL LEATHER	09
METALS	10
LACCHE	11
BRILLIANT VELOUR	14
ECONABUK	16
FINE MATERIALS	18
POOL CLOTHES	20
MAHJONG CLOTHES	22

NABUK



Origin: Bulls
 Provenance: United Kingdom, France, South Germany
 Thickness: mm. 1,3
 Grain appearance: suede aspect, natural full grain leather
 Bending resistance: >50.000 cycles method UNI EN IS 5402-1
 Traction resistance: >16 N/mm² method UNI EN ISO 3376
 Flame retardant
 Water resistant
 Nabuk cleaning kit available

NOTE: Slight chromatic differences may occur between samples and real colours.

NABUK

CAT. EXTRA



NOTE: Slight chromatic differences may occur between samples and real colours.

FULL GRAIN LEATHER



Origin: Bulls
 Provenance: United Kingdom, France, South Germany
 Thickness: mm. 1,2
 Grain appearance: natural smooth aspect, full grain leather
 Bending resistance: >50.000 cycles method UNI EN IS 5402-1
 Traction resistance: >16 N/mm² method UNI EN ISO 3376
 Flame retardant
 Water resistant
 Leather protection kit available

NOTE: Slight chromatic differences may occur between samples and real colours.

FULL GRAIN LEATHER

CAT. EXTRA



OC12



OC14



OC16



OC10



OC15



OC13



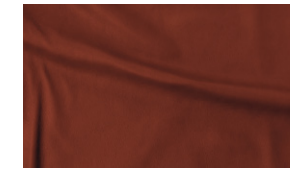
OC11



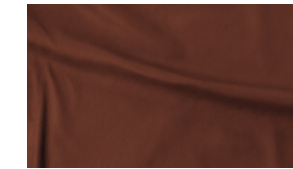
OC01



OC18



OC02



OC03



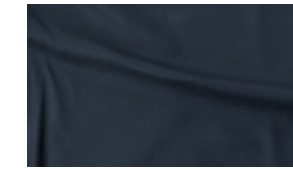
OC04



OC09



OC07



OC19

NOTE: Slight chromatic differences may occur between samples and real colours.

TOP GRAIN LEATHER



Origin: Bulls
 Provenance: United Kingdom, France, South Germany
 Thickness: mm. 1,1
 Grain appearance: smooth aspect, fine grain leather
 Bending resistance: >50.000 cycles method UNI EN IS 5402-1
 Traction resistance: >16 N/mm² method UNI EN ISO 3376
 Flame retardant
 Water resistant
 Leather protection kit available

NOTE: Slight chromatic differences may occur between samples and real colours.

TOP GRAIN LEATHER

 GA01 CAT. SOFT	 GA04 CAT. SOFT	 GA03 CAT. SOFT	 GA05 CAT. SOFT
 GA08 CAT. SOFT	 GA06 CAT. SOFT	 BRE667 CAT. SOFT	 GA07 CAT. SOFT
 GA36 CAT. SOFT	 GA02 CAT. SOFT	 GA57 CAT. SOFT	 GA09 CAT. SOFT
 GA10 CAT. SOFT	 NUV151 CAT. EXTRA	 GA15 CAT. SOFT	 GA13 CAT. SOFT
 GA14 CAT. SOFT	 GA33 CAT. SOFT	 GA37 CAT. SOFT	 NUV156 CAT. EXTRA
 NUV155 CAT. EXTRA	 GA39 CAT. SOFT	 GA38 CAT. SOFT	 NUV160 CAT. EXTRA
 BRE620 CAT. SOFT	 BRE669 CAT. SOFT	 GA21 CAT. SOFT	 GA22 CAT. SOFT
 GA23 CAT. SOFT	 GA24 CAT. SOFT	 GA11 CAT. SOFT	 GA12 CAT. SOFT
 GA16 CAT. SOFT	 GA17 CAT. SOFT	 GA18 CAT. SOFT	 GA19 CAT. SOFT

NOTE: Slight chromatic differences may occur between samples and real colours.

TOP GRAIN LEATHER

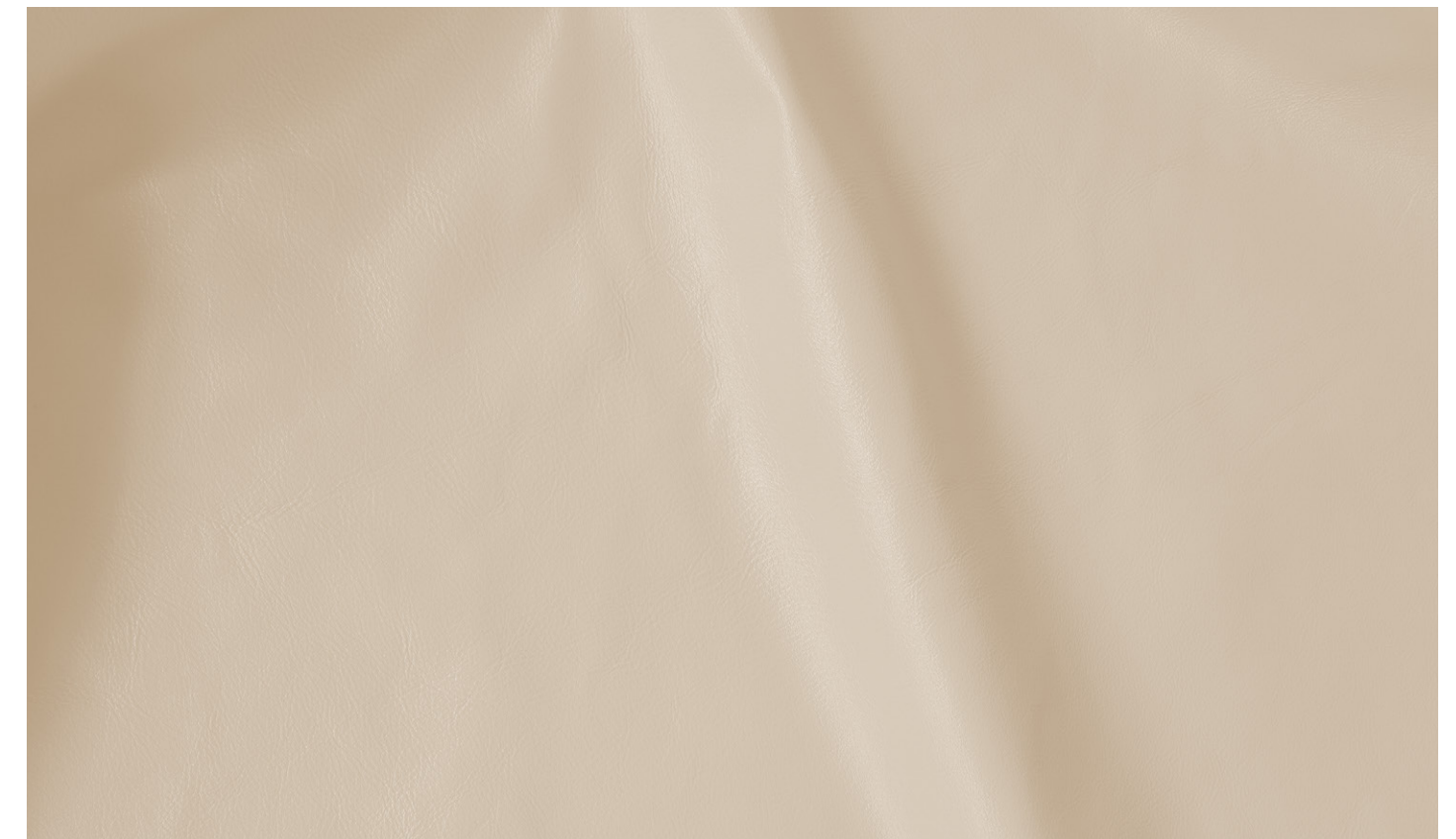


NOTE: Slight chromatic differences may occur between samples and real colours.



PEARL LEATHER

CAT. SOFT



Origin: Bulls
 Provenance: United Kingdom, France, South Germany
 Thickness: mm. 1,1
 Grain appearance: shiny and pearly aspect, fine grain leather
 Bending resistance: >50.000 cycles method UNI EN IS 5402-1
 Traction resistance: >16 N/mm² method UNI EN ISO 3376
 Flame retardant
 Water resistant
 Leather protection kit available



NOTE: Slight chromatic differences may occur between samples and real colours.

METALS



Metals of different nature finished in different looks.

CAT. A



POLISHED CHROME METAL

CAT. C



BRUSHED CHAMPAGNE



BRUSHED BRONZE METAL

CAT. B



POLISHED GOLD PLATED METAL



BRUSHED TITANIUM



POLISHED BLACK NICKEL



BRUSHED COPPER METAL

NOTE: Slight chromatic differences may occur between samples and real colours.

LACCHE



MATT
15 Gloss
Elegant and never out of style.



SOFT TOUCH
0 Gloss top coat
Very soft and pleasant to touch.



GLOSSY
100 Glossy top coat
Great luminosity and refinement.



METALLISED
Varnish with metallic pigments.

NOTE: Slight chromatic differences may occur between samples and real colours.

LACCHE

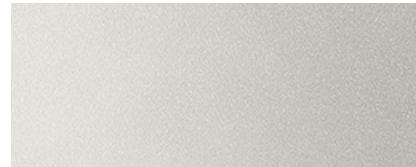


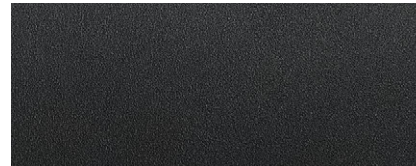
MATT	SOFT TOUCH	GLOSSY
		
BIANCO		
		
AVORIO		
		
BISCOTTI		
		
HAZELNUT		
		
DESERT TAUPE		
		
LIGHT BROWN		
		
DARK BROWN		
		
PERLA		
		
LILAC GREY		

NOTE: Slight chromatic differences may occur between samples and real colours.

LACCHE

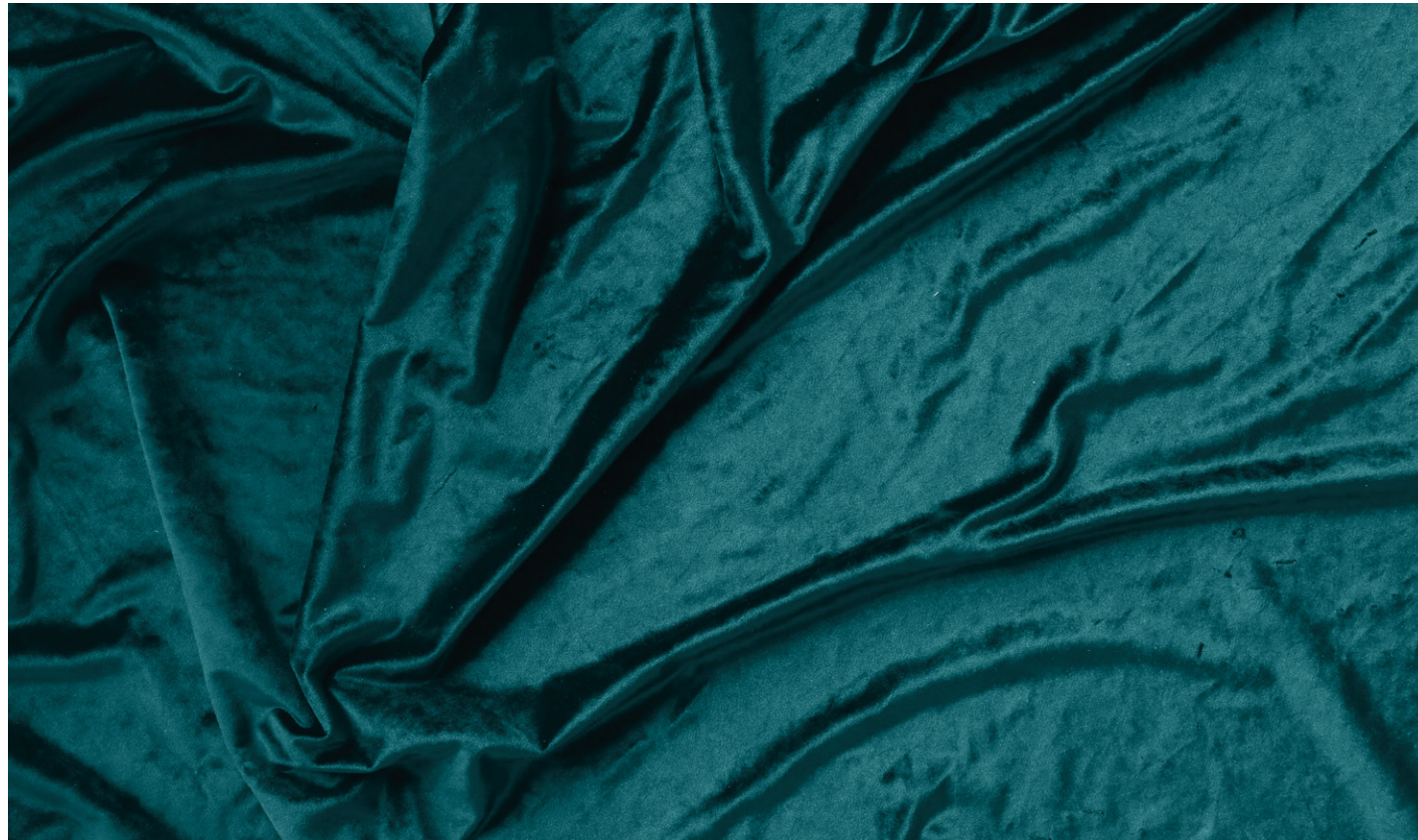
MATT	SOFT TOUCH	GLOSSY
		
TORTORA		
		
DARK TORTORA		
		
ANTRACITE		
		
NERO		
		
WINE		

LACCHE

METALLISED		
		
METAL SILVER	METAL PIOMBO	METAL TITANIO
		
METAL BLACK	BRONZE	METAL GOLD

NOTE: Slight chromatic differences may occur between samples and real colours.

BRILLIANT VELOUR



Synthetic velvet, silk aspect
 Composition: PI 100%
 Abrasion resistance: 100.000 speed spin
 Pilling test 5
 Care instruction available

NOTE: Slight chromatic differences may occur between samples and real colours.

BRILLIANT VELOUR



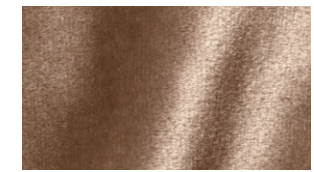
VE26



VE01



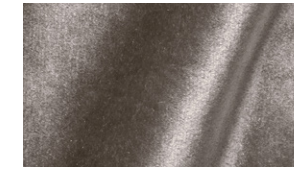
VE02



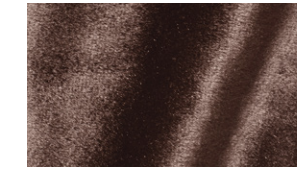
VE03



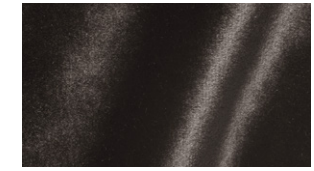
VE10



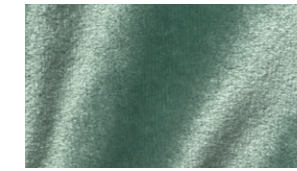
VE05



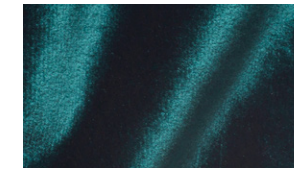
VE07



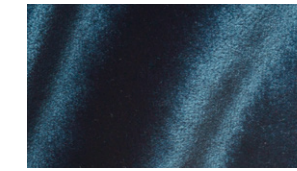
VE08



VE23



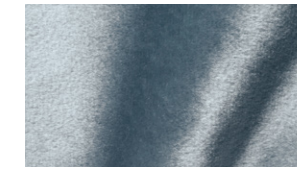
VE15



VE13



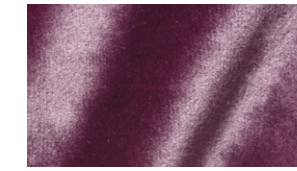
VE14



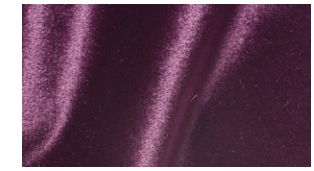
VE12



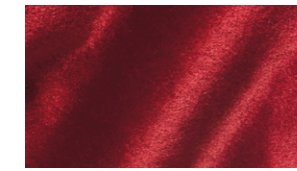
VE24



VE18



VE19



VE16



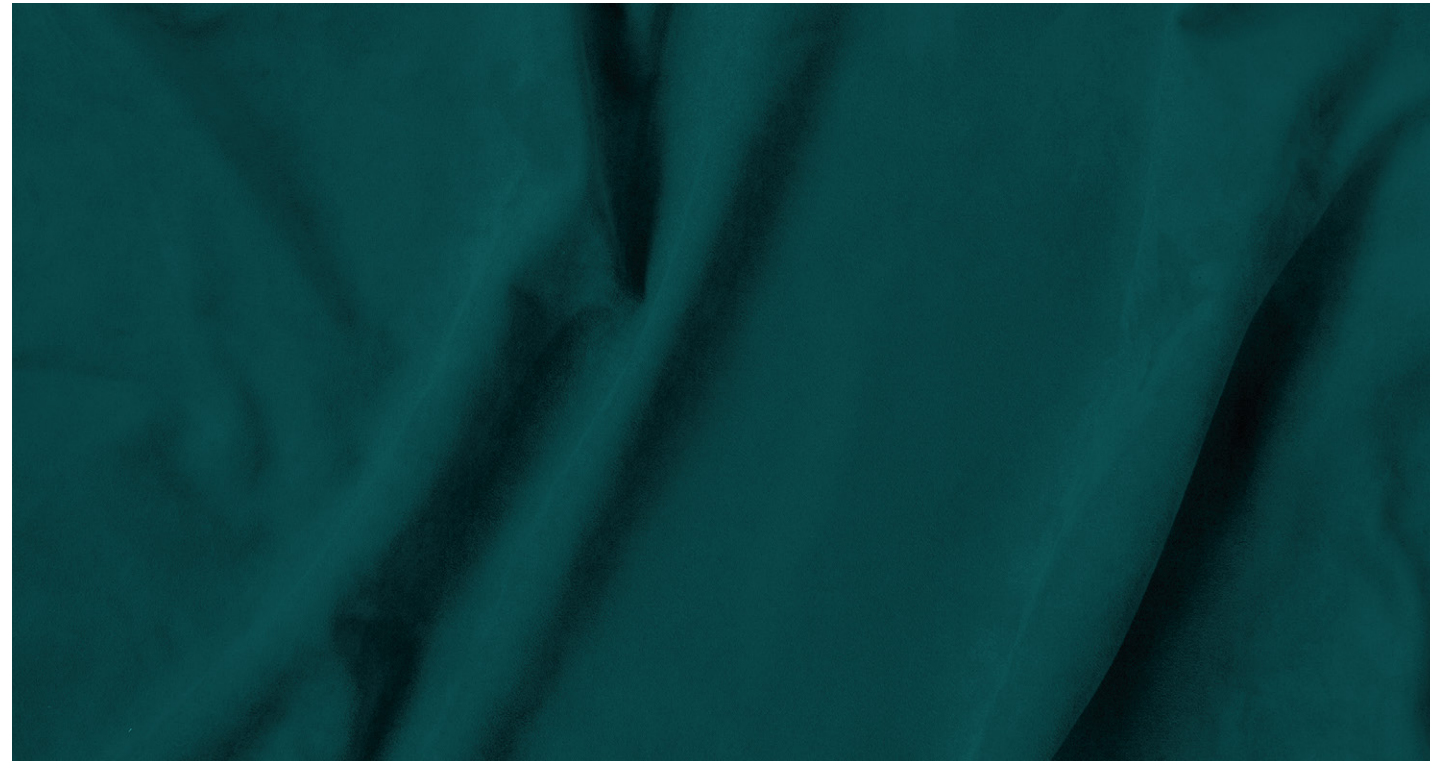
VE17



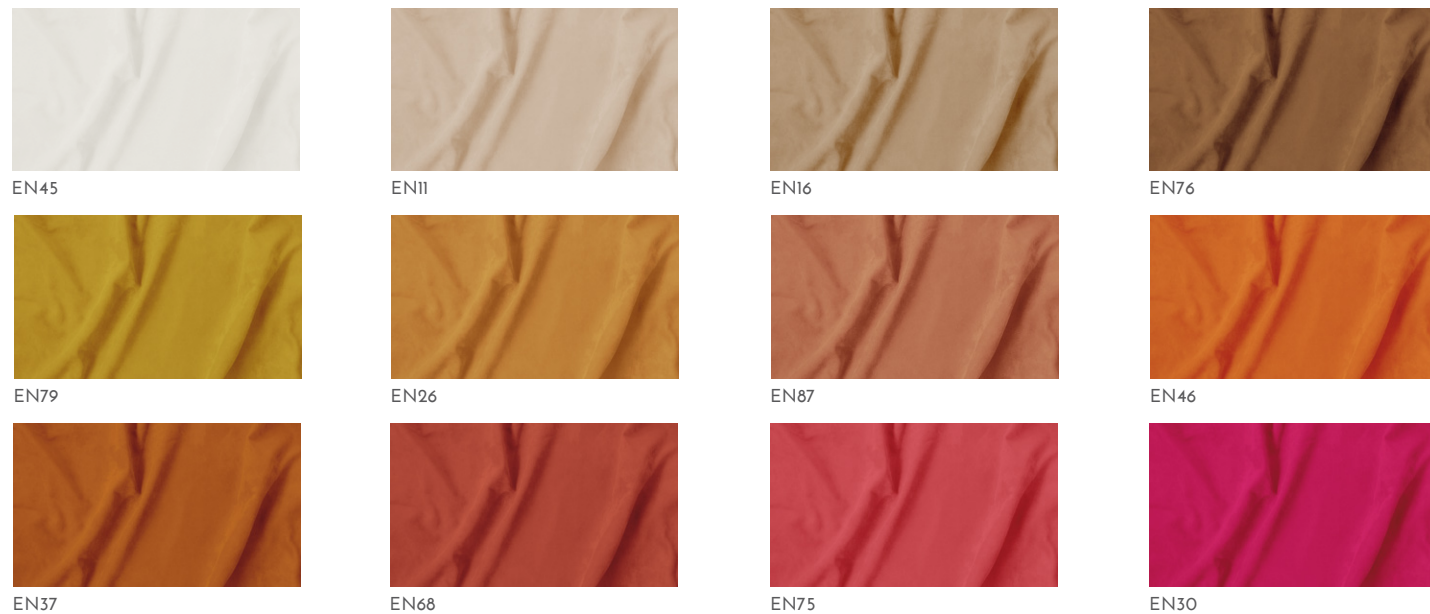
VE25

NOTE: Slight chromatic differences may occur between samples and real colours.

ECONABUK



Suede microfiber
 Composition: Pl.55- PU.45
 Thickness: mm. 1,3
 Abrasion resistance: > 30.000 cycles
 Pilling test > 4/5
 Flame retardant
 Water repellent
 Easy stain removal guide available



NOTE: Slight chromatic differences may occur between samples and real colours.

ECONABUK



NOTE: Slight chromatic differences may occur between samples and real colours.

FINE MATERIALS

Collections with a bold style and great charm:
Vismara adorns furniture with the seductive
beauty of precious materials: marbles, embossing leathers,
marquetries, woods, metals and geometrical patterns.



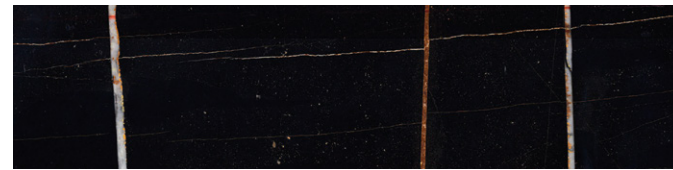
DIAMOND
Bronze and aluminum woven fabric
COD. BRN



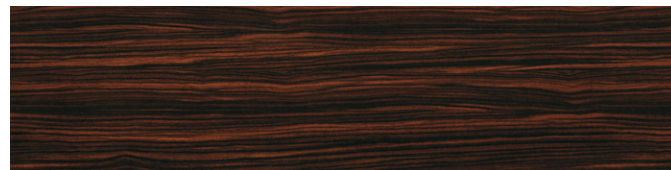
MOSAIK
Handmade mosaik composed by diamond tiles
COD. MK



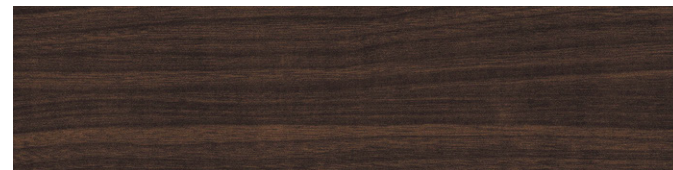
PATAGONIA MARBLE
Natural stone
COD. PM



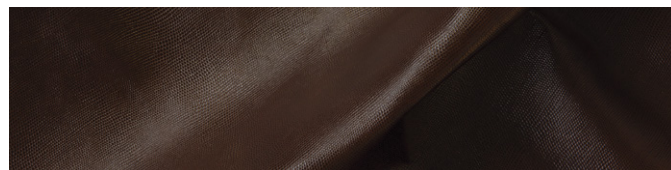
SAHARA MARBLE
Natural stone
COD. SAH



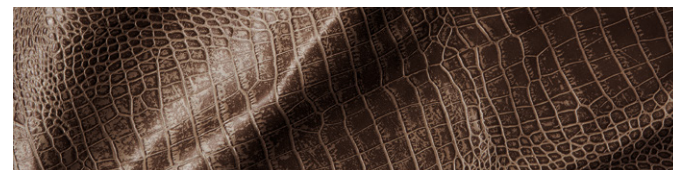
POLISHED EBONY MAKASSAR
Wood veneer
COD. EBM



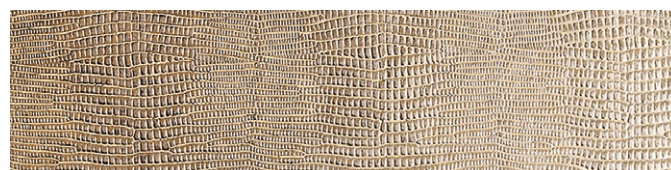
CANALETTO WALNUT
Wood veneer
COD. CAN



PITONE
Embossed leather T. Moro
COD. PIT



ALLIGREEK
Embossed leather T. Moro
COD. ALL



IGUANA
Embossed leather Tortora
COD. IGU

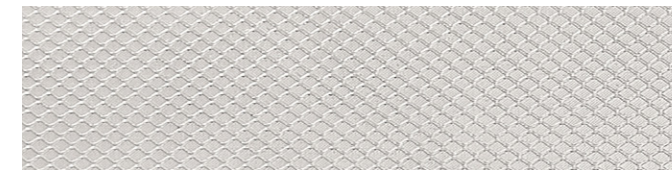


OSTRICH
Embossed leather Ivory
COD. OST

NOTE: Slight chromatic differences may occur between samples and real colours.

FINE MATERIALS

CAT. A



ALUMINUM FIBER
Aluminum woven fabric
COD. AF

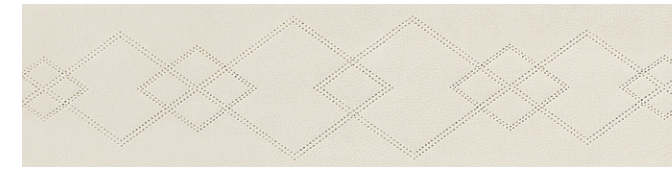


CARBON FIBER
Carbon woven fabric
COD. CF

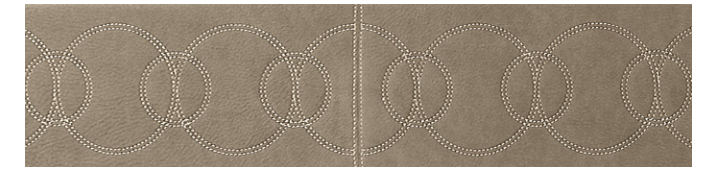


MILLERIGHE
Pantographed Glossy wood section
COD. MI

CAT. B



NABUK RHOMBUS
Embroidered nabuk leather
COD. NRH

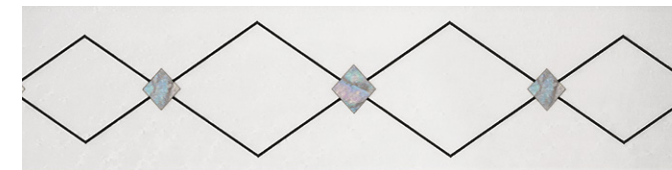


NABUK RINGS
Embroidered nabuk leather
COD. NRI

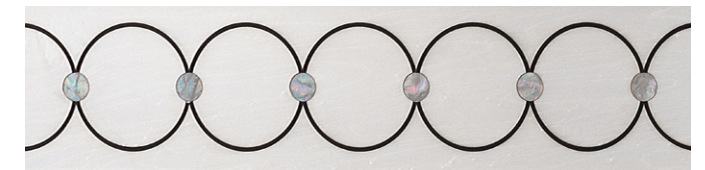


NABUK ELEGANCE
Embroidered nabuk leather
COD. NEL

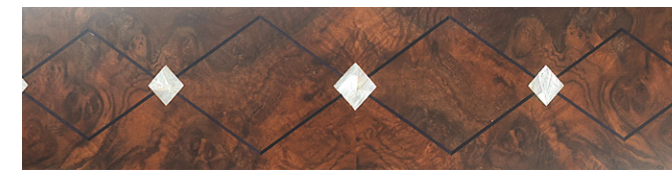
CAT. C



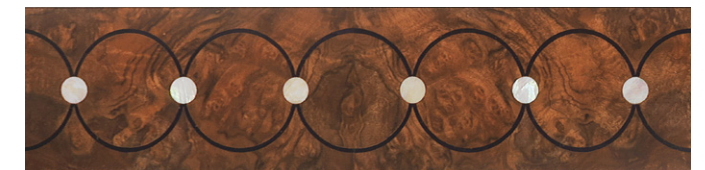
ERABLE RHOMBUS
Bleached erable wood inlaid
with ebony and mother-of-pearl
COD. ERH



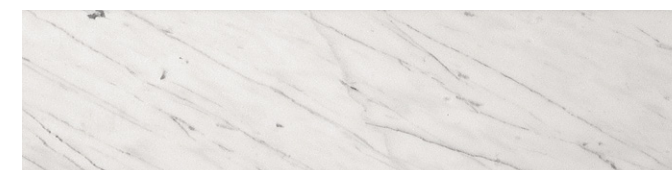
ERABLE RINGS
Bleached erable wood inlaid
with ebony and mother-of-pearl
COD. ERI



RADICA RHOMBUS
Walnut briar-root inlaid
with ebony and mother-of-pearl
COD. RRH



RADICA RINGS
Walnut briar-root inlaid
with ebony and mother-of-pearl
COD. RRI



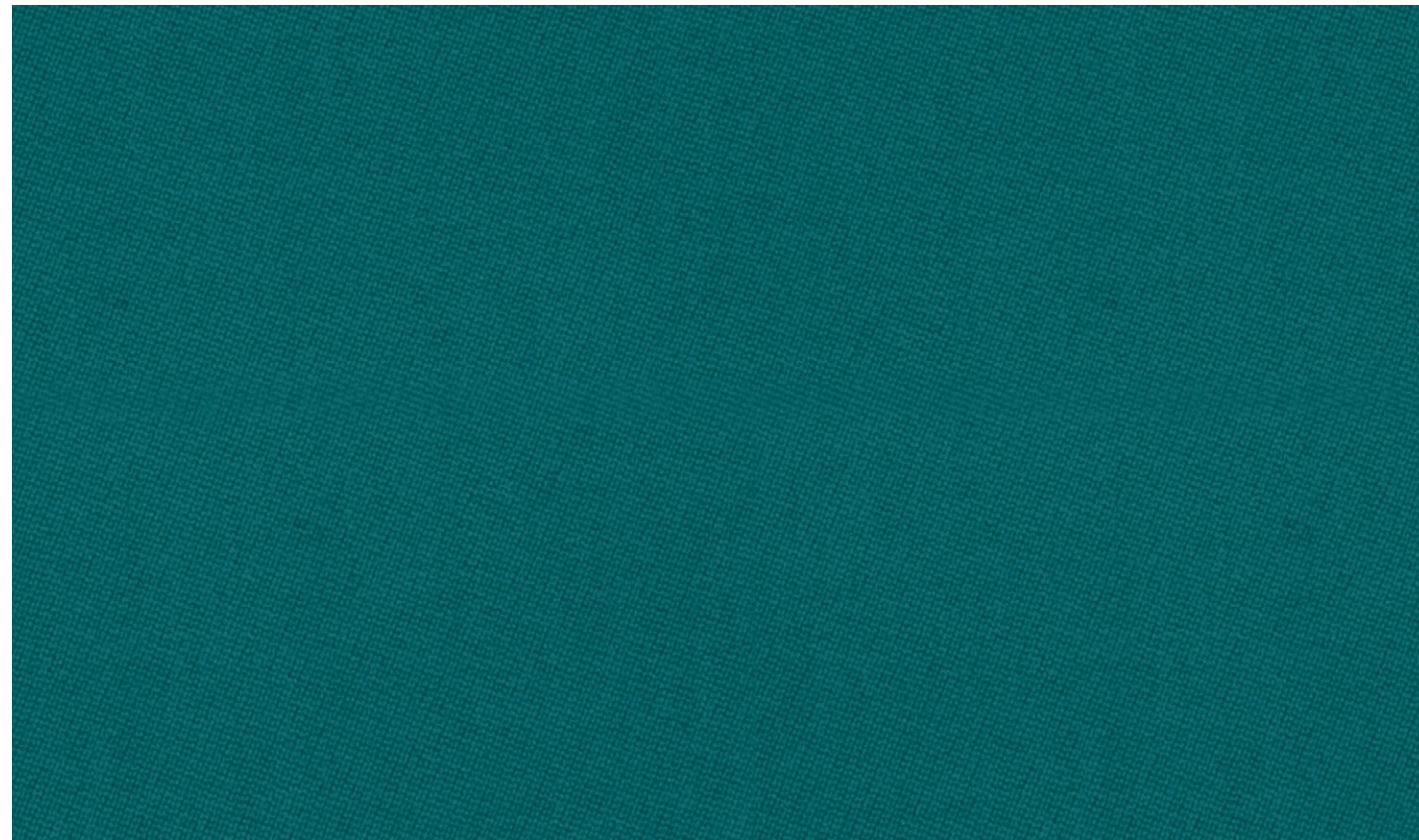
CARRARA MARBLE
Carrara marble combined
with glass. It could be backlit
COD. CM



SAVER MARBLE
Indian marble combine
with glass. It could be backlit
COD. SM

NOTE: Slight chromatic differences may occur between samples and real colours.

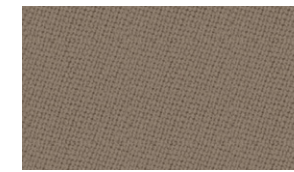
POOL CLOTHES



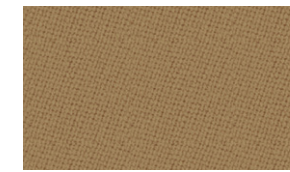
Vismara Design chooses Simonis cloth manufacturer, leading company for professional pools.
 Simonis cloth is incredibly smooth without felt-like fuzziness and does not wear like nappy woolen cloth which eventually develops tracks or grooves in the cloth, all the while shedding short fibers that constantly need to be removed.
 With Simonis, clothes ball spin is consistent, and the roll stays straight and true on every shot.
 Composition: 50% wool 50% cotton
 Cloth care & maintenance instruction available
 Dust and Chalk cleaner available

NOTE: Slight chromatic differences may occur between samples and real colours.

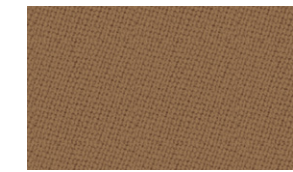
POOL CLOTHES



TAUPE



GOLD



CAMEL



CHOCOLATE



PETROLEUM BLUE



BLUE GREEN



DARK GREEN



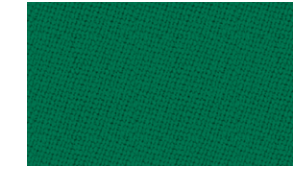
SPRUCE



EMPIRE GREEN



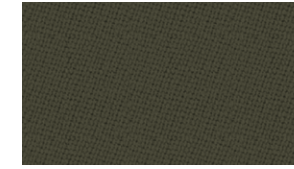
ENGLISH GREEN



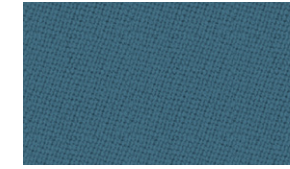
YELLOW GREEN



APPLE GREEN



OLIVE GREEN



POWDER BLUE



TOURNAMENT BLUE



ELECTRIC BLUE



ROYAL BLUE



MARINE BLUE



PURPLE



ORANGE



BURGUNDY



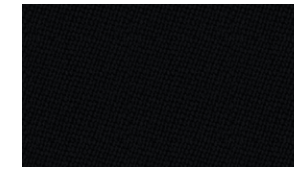
WINE



FUXIA



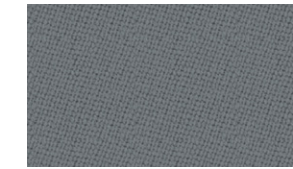
RED



BLACK



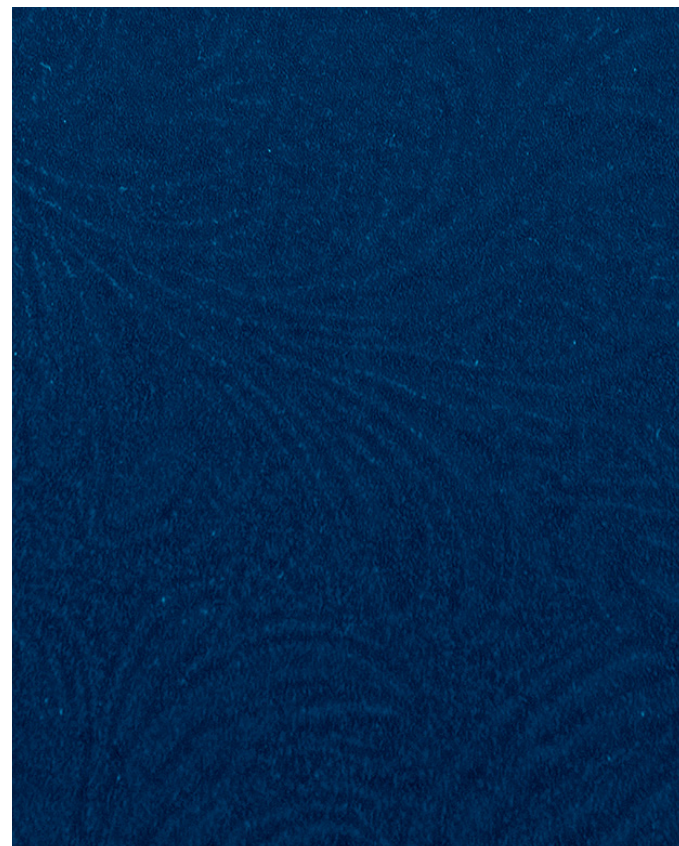
SLATE GREY



GREY

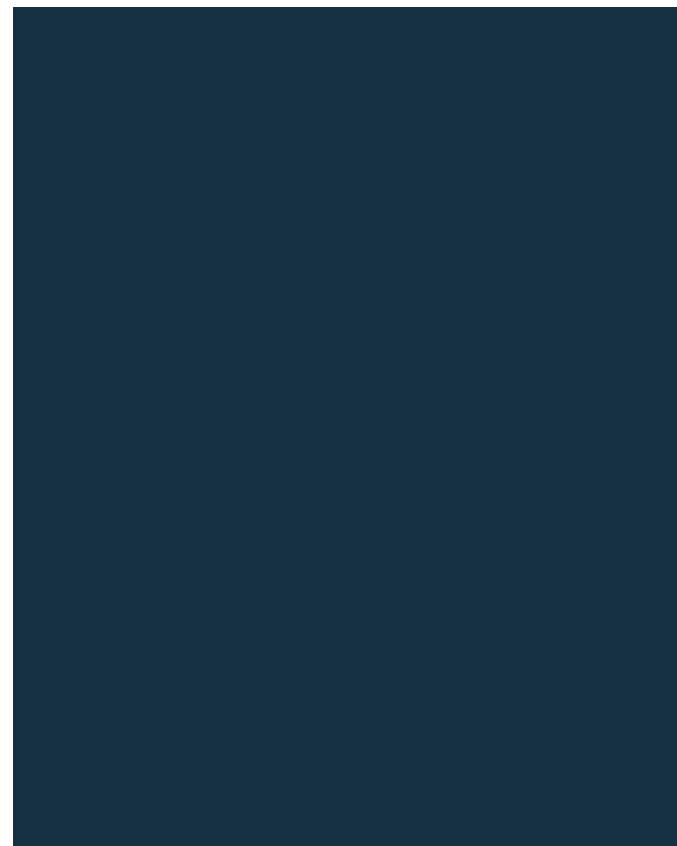
NOTE: Slight chromatic differences may occur between samples and real colours.

MAHJONG CLOTHES



VELVET

A thick damask embossed velvet specific for the right sliding of Mahjong tiles
Composition: Pl 100%



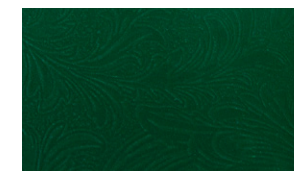
COWHIDE

A contemporary and high-end option to cover Mahjong playing surface. Very resistant and perfect for the sliding of Mahjong tiles.
Thickness: 2 mm

NOTE: Slight chromatic differences may occur between samples and real colours.

MAHJONG CLOTHES

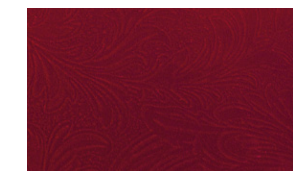
VELVET



GREEN



BLUE



RED Check the availability

COWHIDE



BIANCO



AVORIO



SABBIA



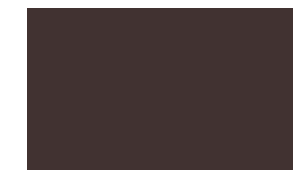
TORTORA



LIQUIRIZIA



CIOCCOLATO



TESTA DI MORO



BORDEAUX SCURO



BORDEAUX CHIARO



LONDRA



ROSSO BULGARO



ROSSO



ARANCIONE



COLONIALE



NATURAL



GIALLO



NERO



BLU SCURO



BLU CHIARO



VERDE BOSCO



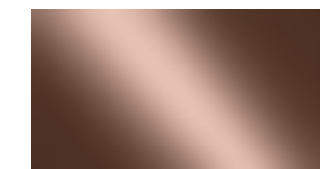
ACCIAIO



SILVER



TITANIO



RUGGINE

NOTE: Slight chromatic differences may occur between samples and real colours.



REMARKS:

Lacche

Possible changes in the colours or eventual imperfections are due to the particular hand-decorations and for this reason to be considered a value and guarantee of the artisanal product.

The natural variations of colours caused by artificial or natural lights, the minimal dimensional variations caused by un-common levels of humidity or dryness do not have to be considered as defects.

For special finishes not included in this book, please add +10% increase

Leather | Fabric

Leather used on our items are all natural European leathers: they can be plain or patterned.

All natural marks, wrinkliness, different levels of gleam and shade, spots and, general imperfections, folds due to the natural expansion or movement during use, do not have to be considered defect but elements which feature a natural product and its authenticity.

In some cases (particularly for light colours), these details are more evident, because the technique for tanning them stresses the naturalness of the product and it doesn't cover it with painting or printing.

In fabrics | leathers each batch of production can have minimal variations of tones, in comparison both to the samples sets and to items which have been produced in different periods.

The features of some types of fabrics are related to their composition or way of production and do not have to be considered defects.

The natural variations of colours caused by artificial or natural lights, the minimal dimensional variations caused by un-common levels of humidity or dryness, and in general other natural features of the upholstered covering, do not have to be considered as defects.

A proper use of the products and a proper maintenance of upholsteries, allow to preserve their quality in time.

From any selection of leathers | fabrics not included in this book, Vismara Design will confirm the possibility of using and the related price increase if required.

GENERAL REMARKS:

All finishes, fabrics and leathers in this book are provided just as an indication of the colours. The furniture are hand-made decorated and leathers, woods and marbles are natural materials.

For this reason, possible differences in colours and patterns between the reproduction in this book and the produced furniture must be considered acceptable.

Vismara reserves the right to make all the changes considered necessary to improve the products without any previous notice.



Via Carducci, 3
20822 Seveso (MB) - Italy

T. +39 0362 503726
info@vismara.it
www.vismara.it



