

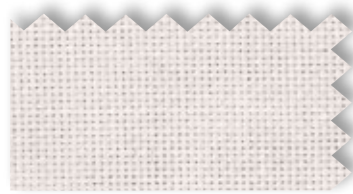
FINITURE
FINISHES
FINITIONS

Categoria - Category

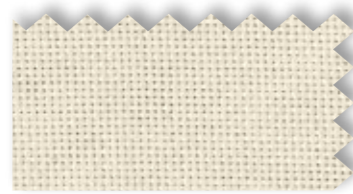
A

GEO

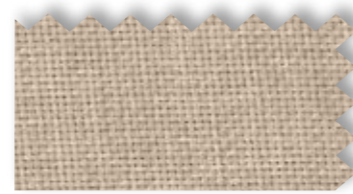
100%PL - IDROREPELENTE



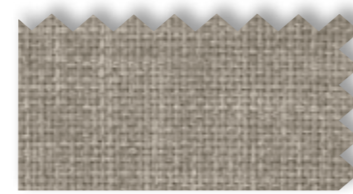
FA 134



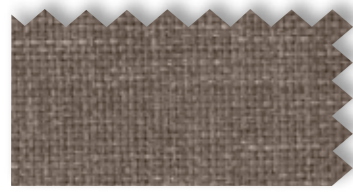
FA 135



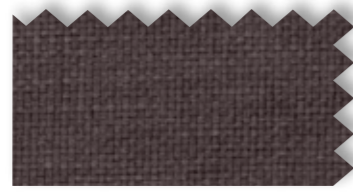
FA 136



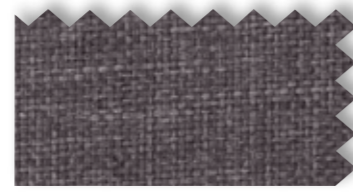
FA 137



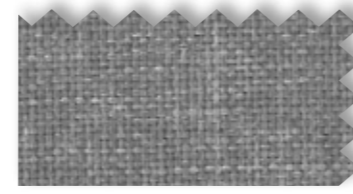
FA 138



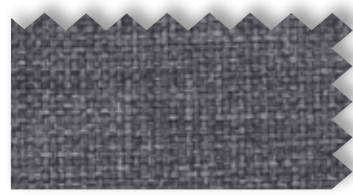
FA 139



FA 140



FA 141



FA 142

Categoria - Category

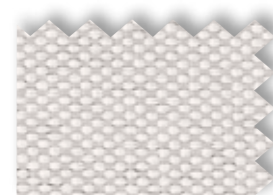
A

IVORY

100%PL - IDROREPELENTE



FA 123



FA 109



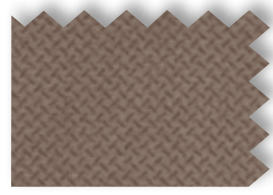
FA 125



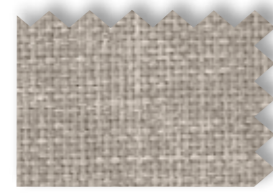
FA 126



FA 127



FA 103



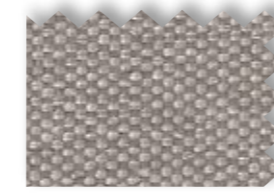
FA 129



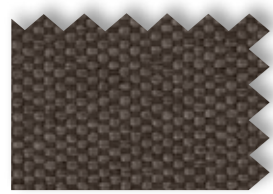
FA 130



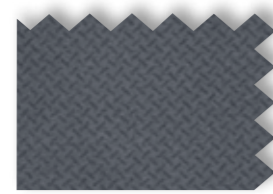
FA 131



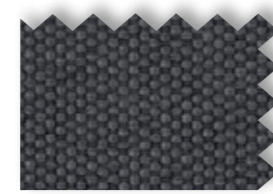
FA 112



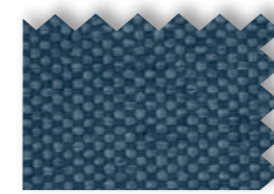
FA 133



FA 111



FA 113



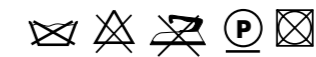
FA 107

Categoria - Category

B

LAND

100%PL



FB 160 Liscio



FB 162 Liscio



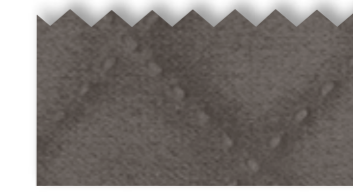
FB 164 Liscio



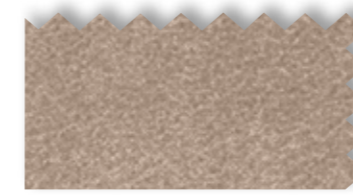
FB 270 Trapuntato



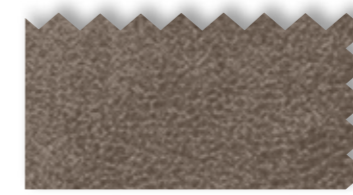
FB 271 Trapuntato



FB 272 Trapuntato



FB 161 Nuvolato



FB 163 Nuvolato



FB 165 Nuvolato



FB 166 Nuvolato

Categoria - Category

B

PEPPER

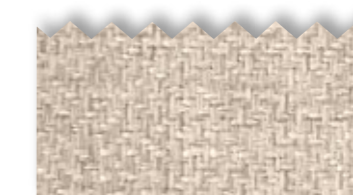
100%PL - IDROREPELENTE
ANTIMACCHIA



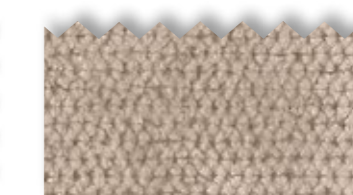
FB 250



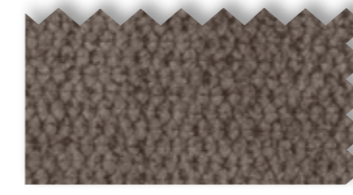
FB 251



FB 252



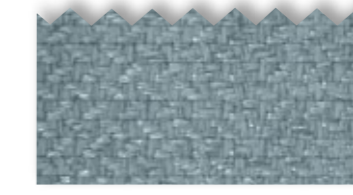
FB 253



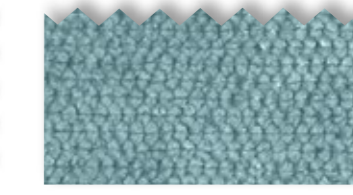
FB 254



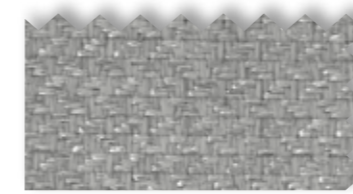
FB 255



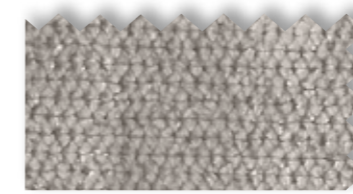
FB 256



FB 257



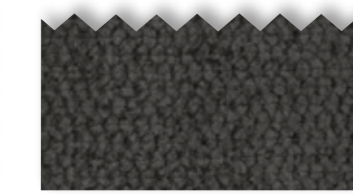
FB 258



FB 259



FB 260



FB 261

I colori e le finiture qui riportati devono ritenersi puramente indicativi. Per una visione realistica consultare il nostro campionario colori.

Colours and finishings shown here are merely indicative. Please see our colour samples book for a more realistic image. - Les coloris et les finitions sont présentés à titre purement indicatif. Pour un rendu réel, consulter notre échantillon.

I colori e le finiture qui riportati devono ritenersi puramente indicativi. Per una visione realistica consultare il nostro campionario colori.

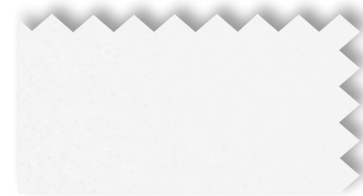
Colours and finishings shown here are merely indicative. Please see our colour samples book for a more realistic image. - Les coloris et les finitions sont présentés à titre purement indicatif. Pour un rendu réel, consulter notre échantillon.

Categoria - Category

C

SALAMANCA

31%CO - 68%PVC - 1%PU
SOLIDITÀ LUCE / LIGHT FASTNESS 5/6
MARTINDALE 20.000



FC 102 Bianco



FC 112 Beige



FC 114 Cipria



FC 115 Gianduia



FC 116 Corteccia



FC 118 Caffè



FC 164 Blu reflex



FC 166 Avio



FC 182 Grigio tempesta



FC 186 Antracite



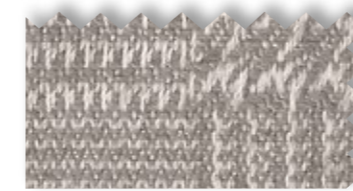
FC 188 Nero

Categoria - Category

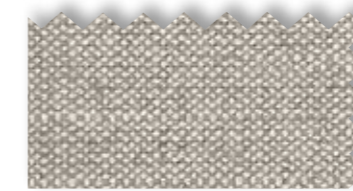
D

ATELIER

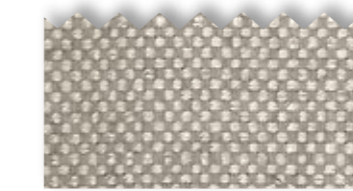
44%VI - 34%CO - 22%LI



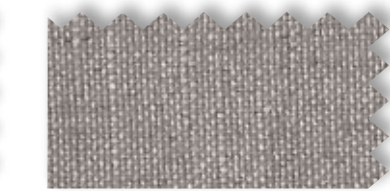
FD 401



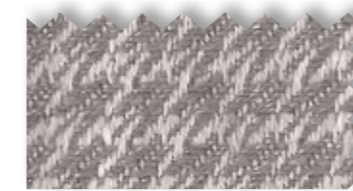
FD 402



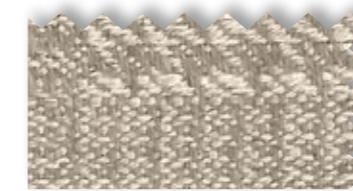
FD 403



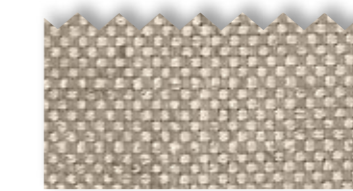
FD 404



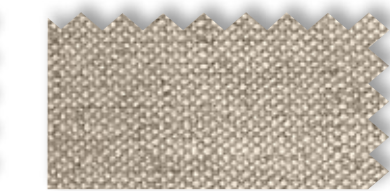
FD 405



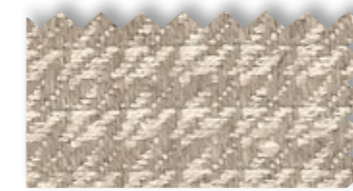
FD 406



FD 407



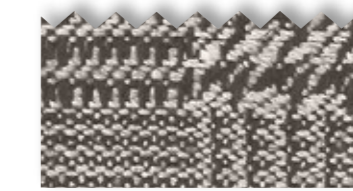
FD 408



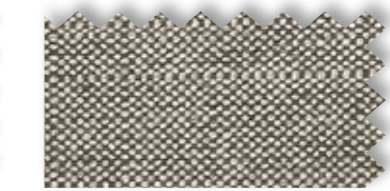
FD 409



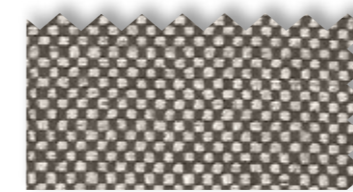
FD 410



FD 411



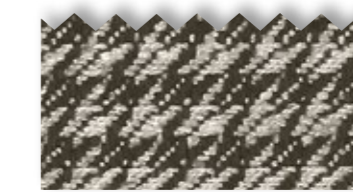
FD 412



FD 413



FD 414



FD 415



FD 416