





Fabrics are shown for design repeat only and may vary in color and pattern.  
Les tissus sont présentés pour illustrer les raccords et les coloris ne sont pas nécessairement fidèles.  
Der abgebildete Stoff zeigt nur den Rapportverlauf. Mögliche Farbabweichungen vorbehalten.  
I tessuti sono mostrati in tutta altezza solo al fine di illustrare il rapporto del disegno, ma il colore potrebbe essere leggermente diverso.  
Las telas se enseñan exclusivamente para ver el rapor del diseño y el colorido podrá no ser exacto al original



FCL 2274/01 Manaos Perroquet



FCL 2332/01 Mariposa Perroquet





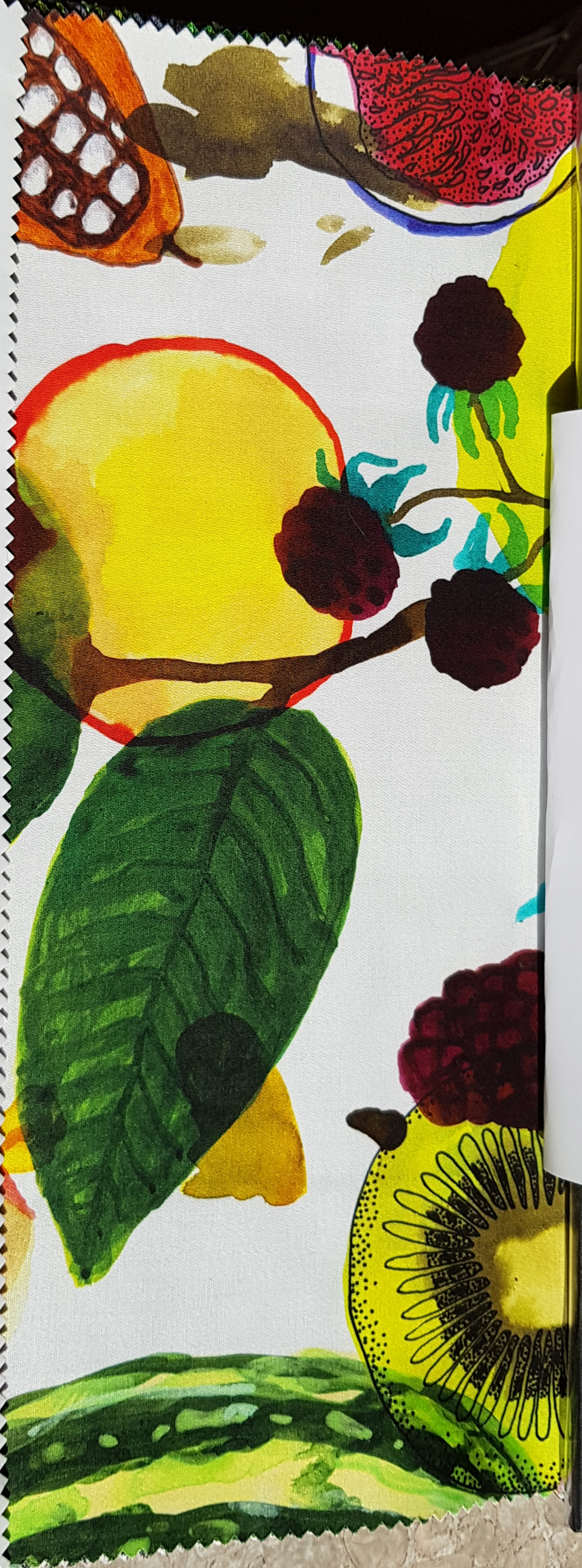
FCL 2332/01 Mariposa Perroquet







FCL 2332/01 Mariposa Perroquet



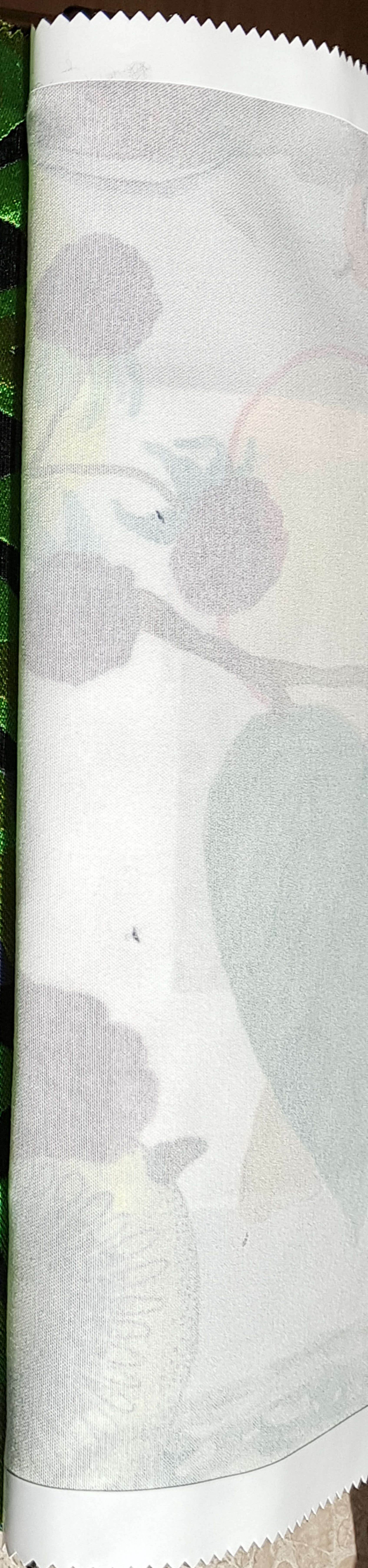
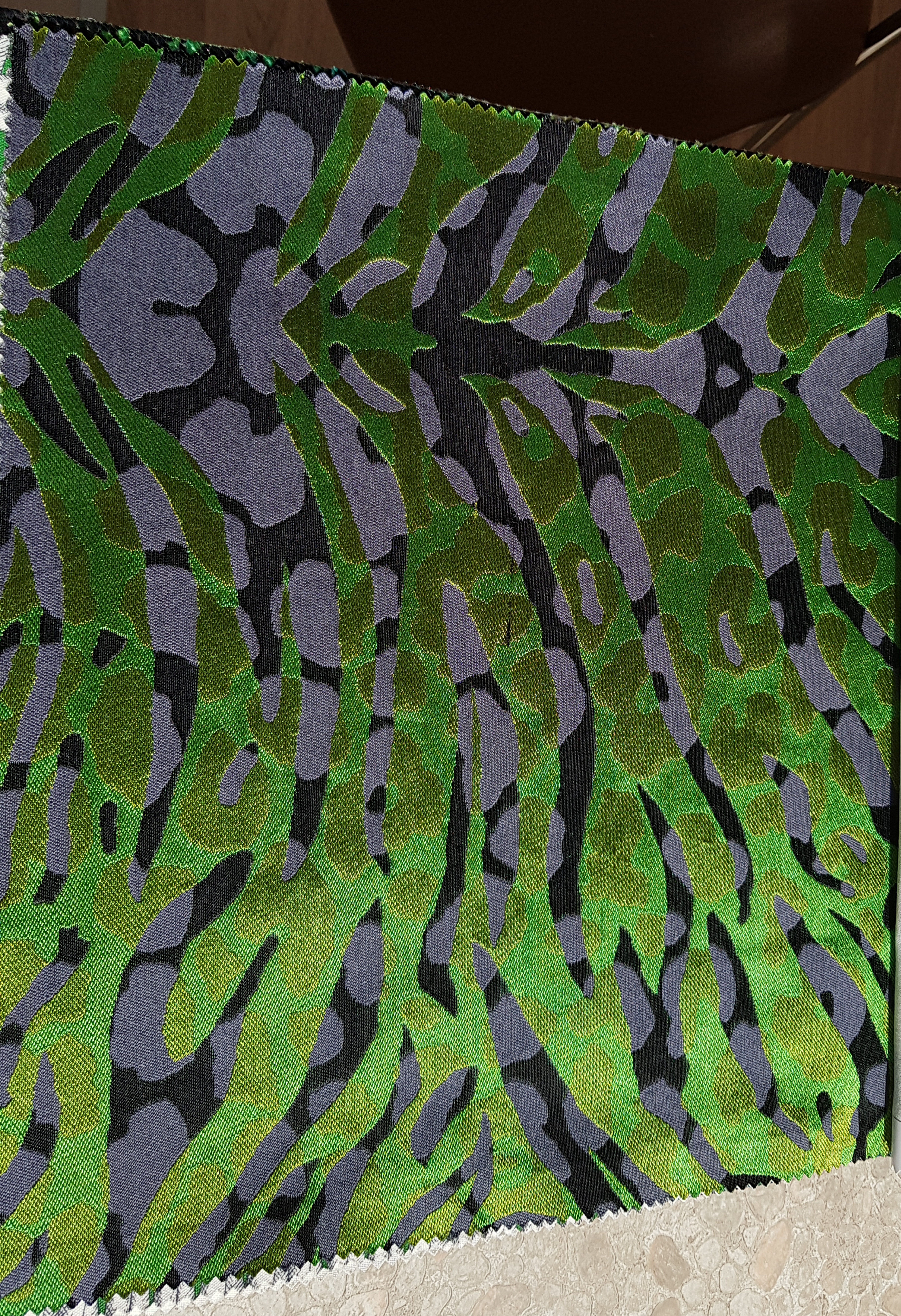
### Christian Lacroix

FCL2274/01  
MANAOS  
Perroquet

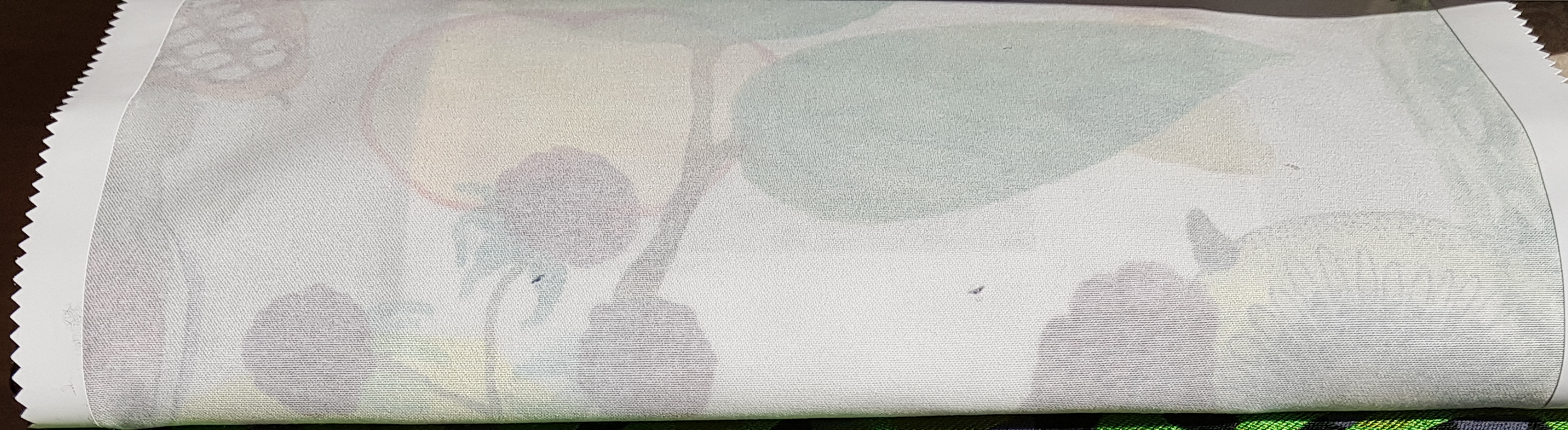
Width/Largeur/Breite/Ancho/Altezza: 137cm / 54"  
Composition/Komposition/Composizione/  
Compositioin: 100% Co  
Repeat/Raccord/Rapport/Rapport: 100cm / 39 1/2"  
Flamcode: B + M  
Martindale: 23.000







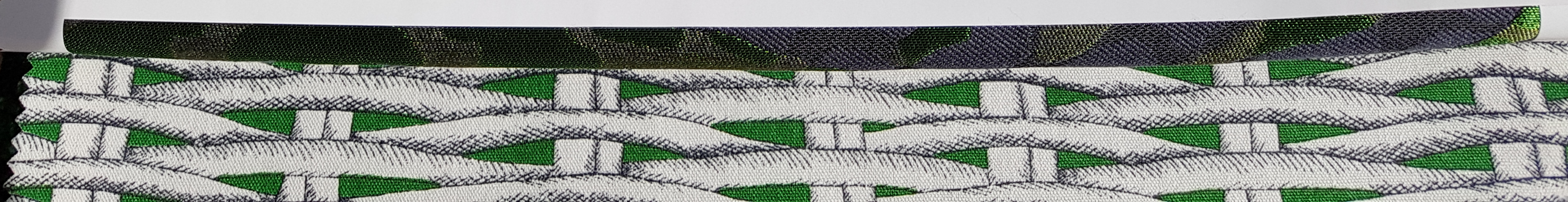
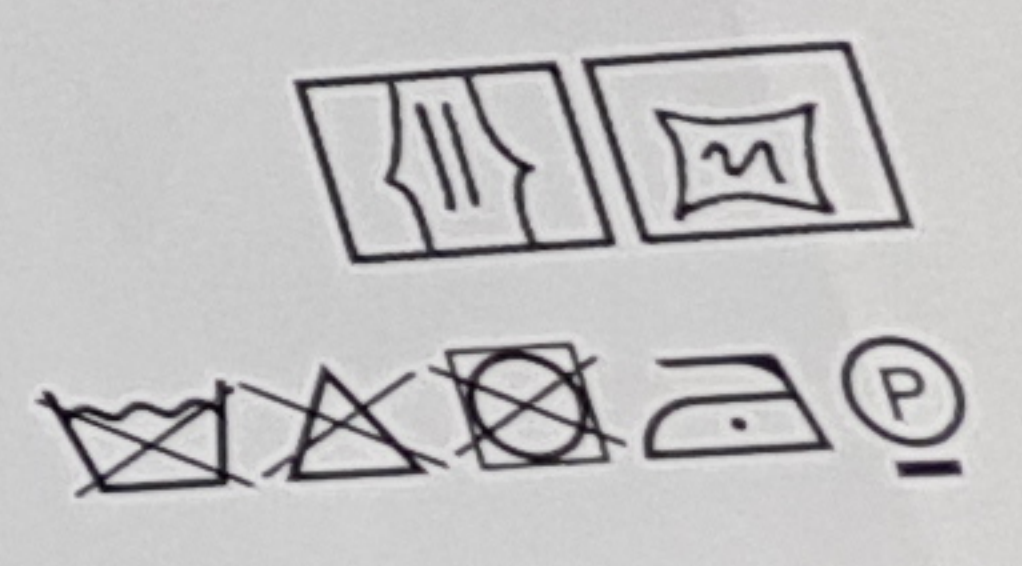




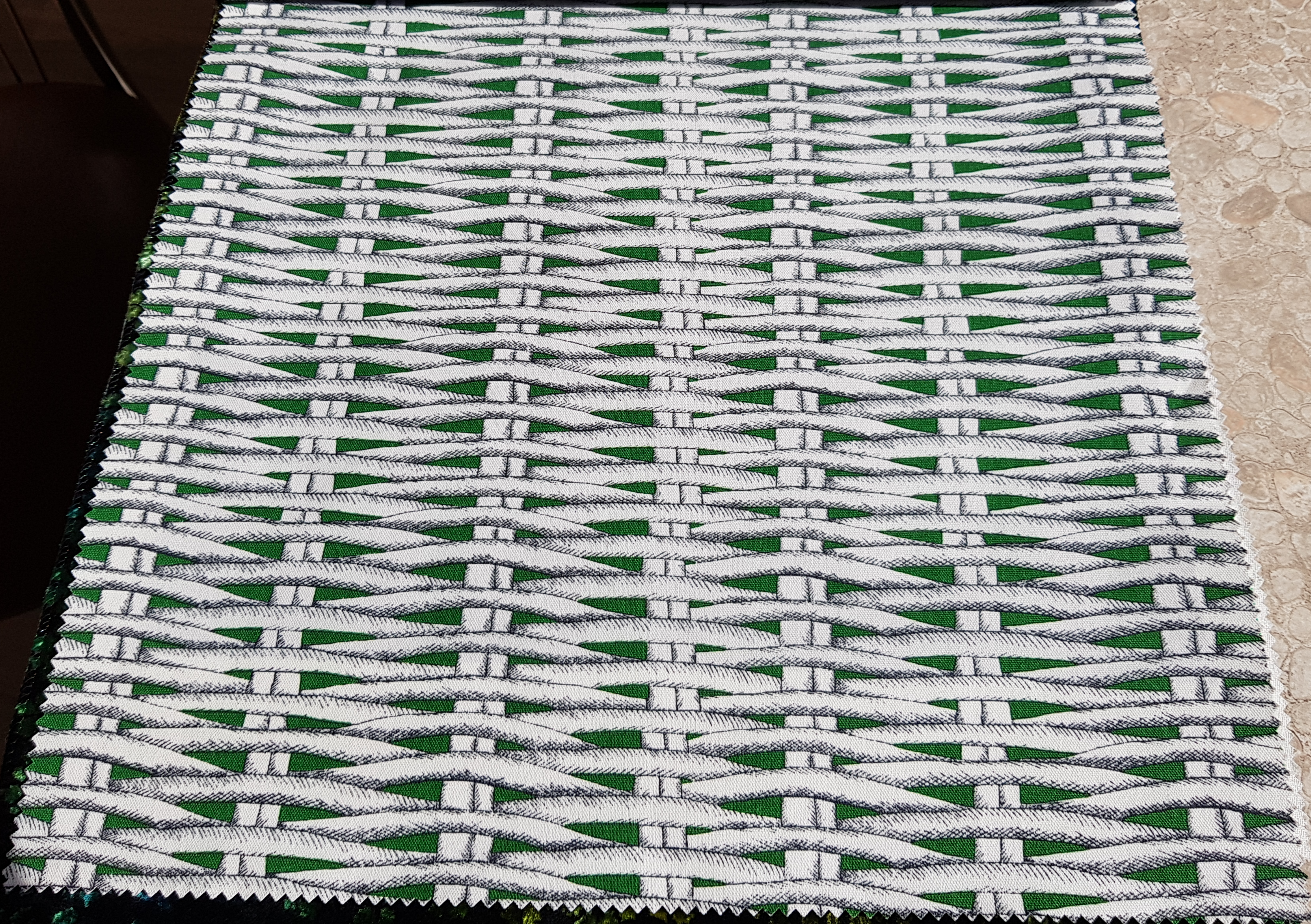
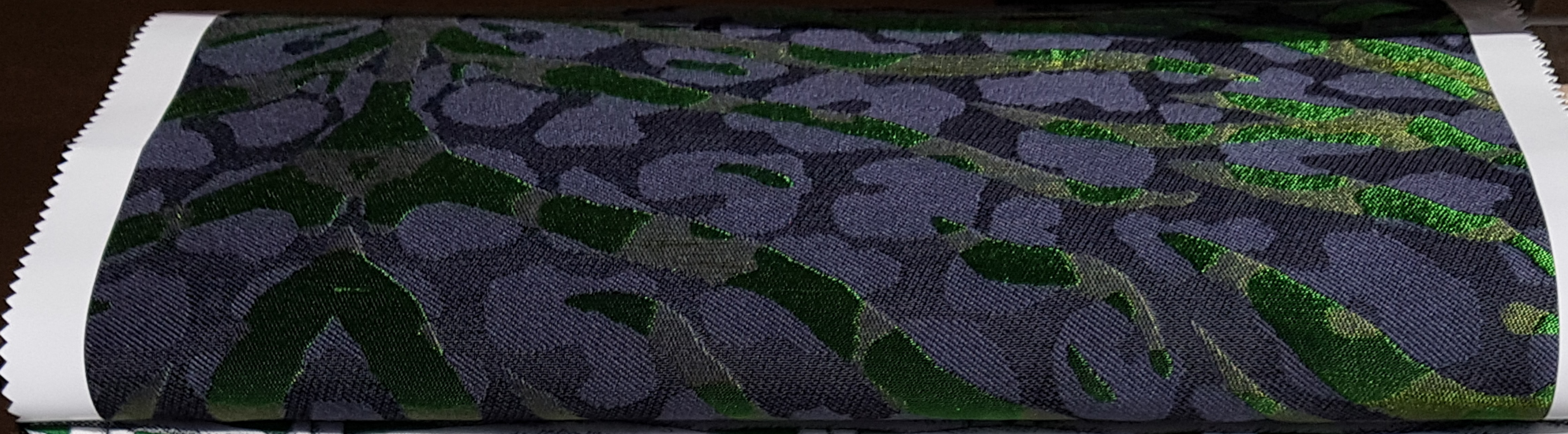
# Christian Lacroix

FCL2284/01  
PANTIGRE  
Malachite

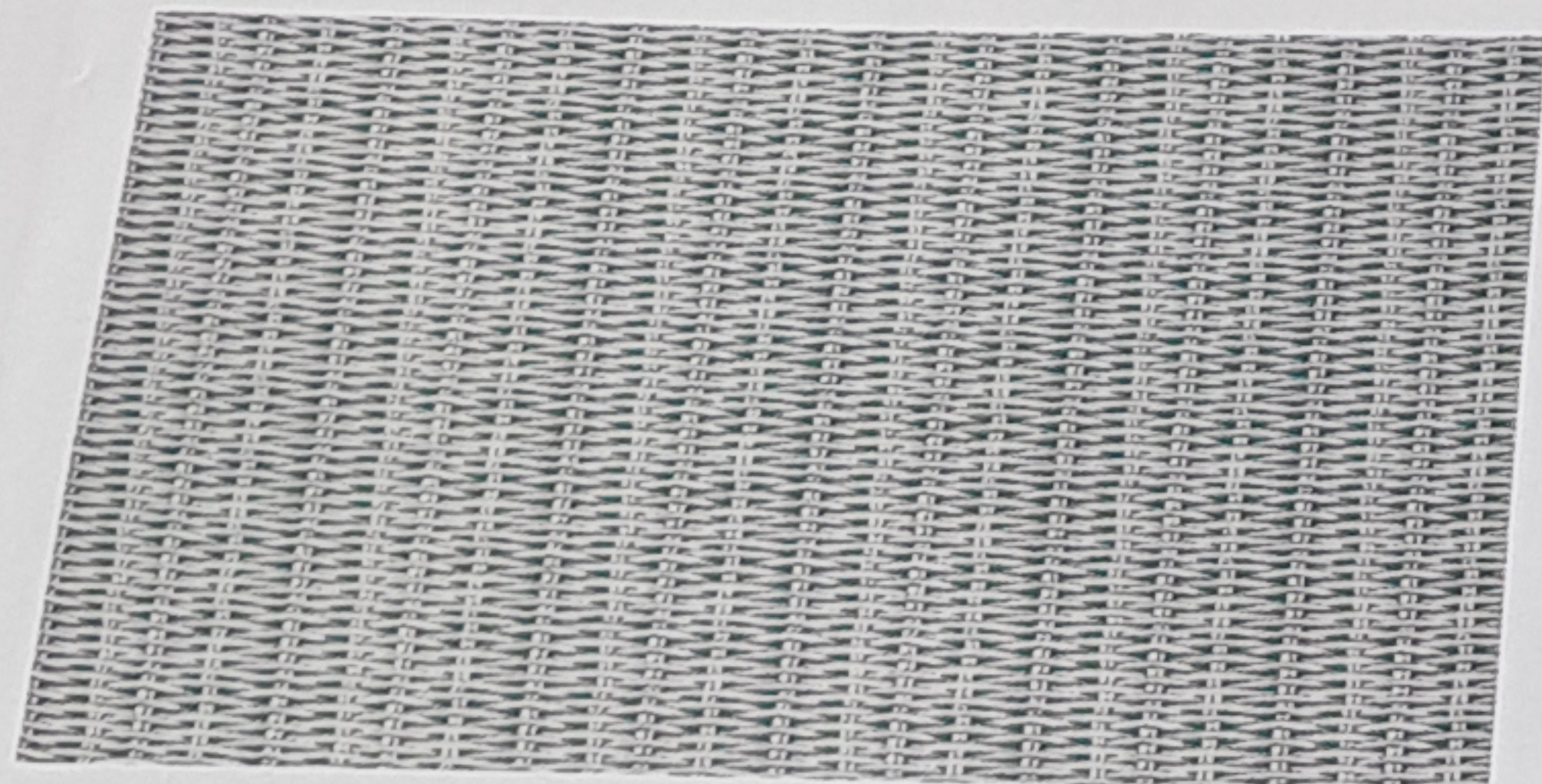
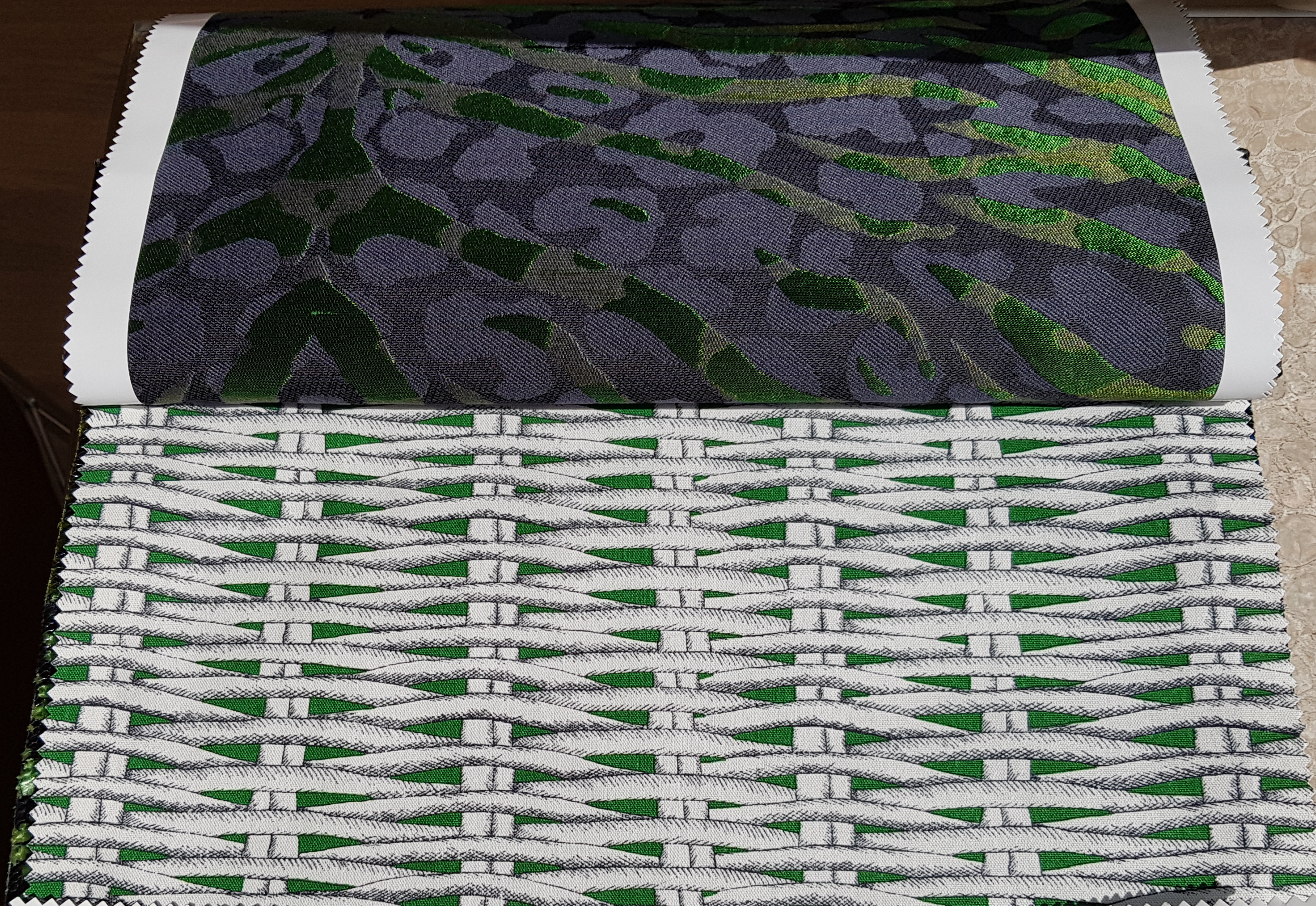
Width/Largeur/Breite/Ancho/Altezza: 142cm / 56"  
Composition/Komposition/Composizione/  
Composición: 93% Vi 7% Si  
Repeat/Raccord/Rapport/Raport/Rapporto: 70cm / 27 1/2"  
Flamcode: Z







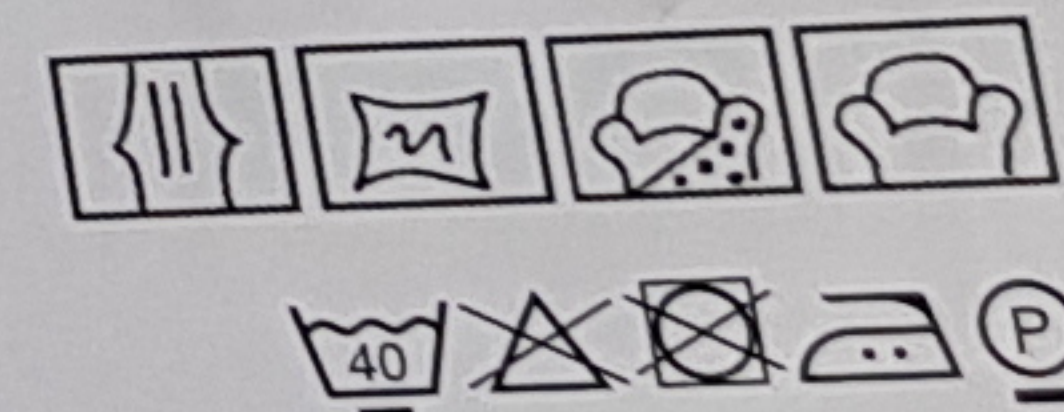




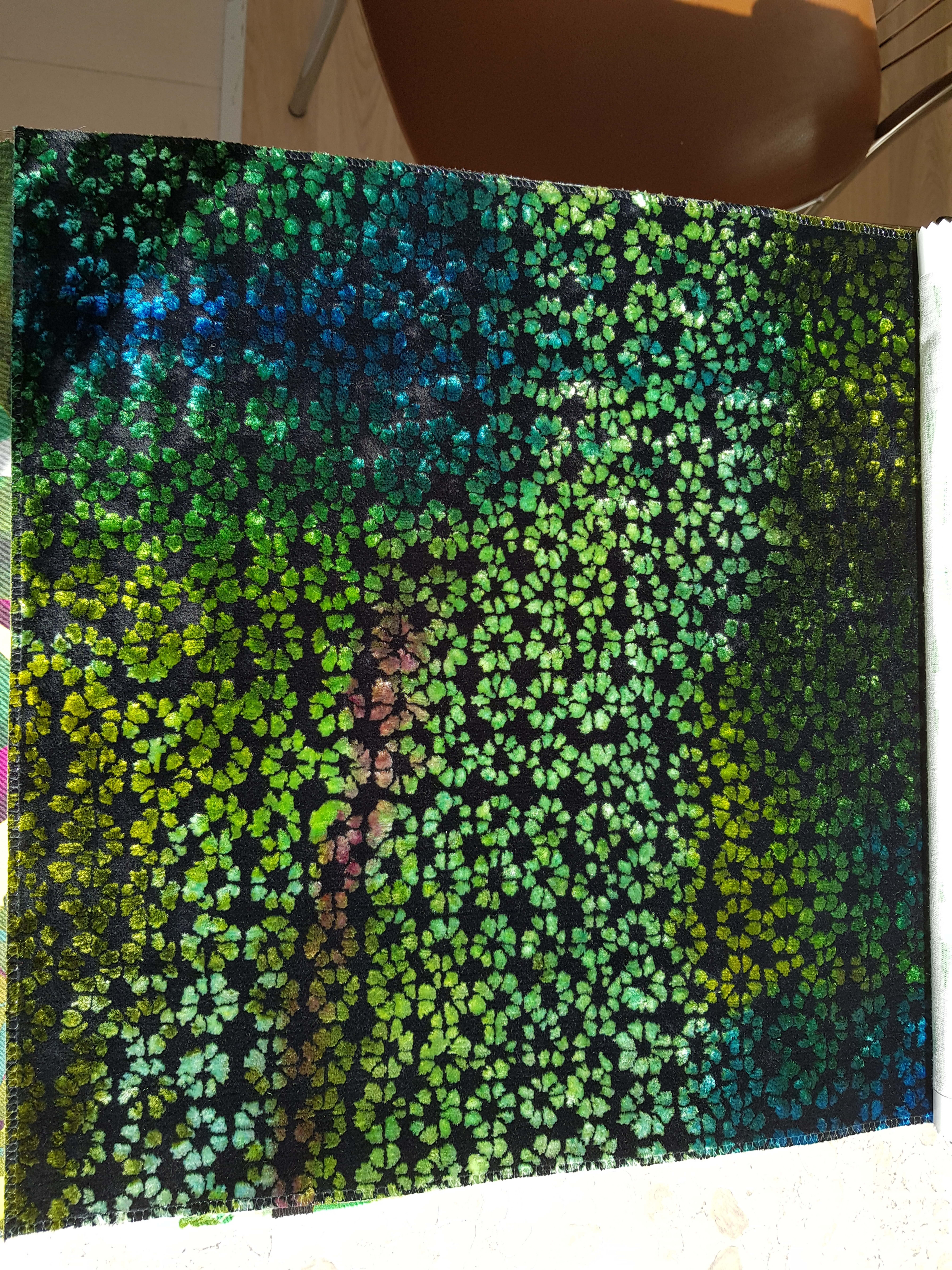
Christian Lacroix

FCL2278/04  
BARBADE  
Malachite

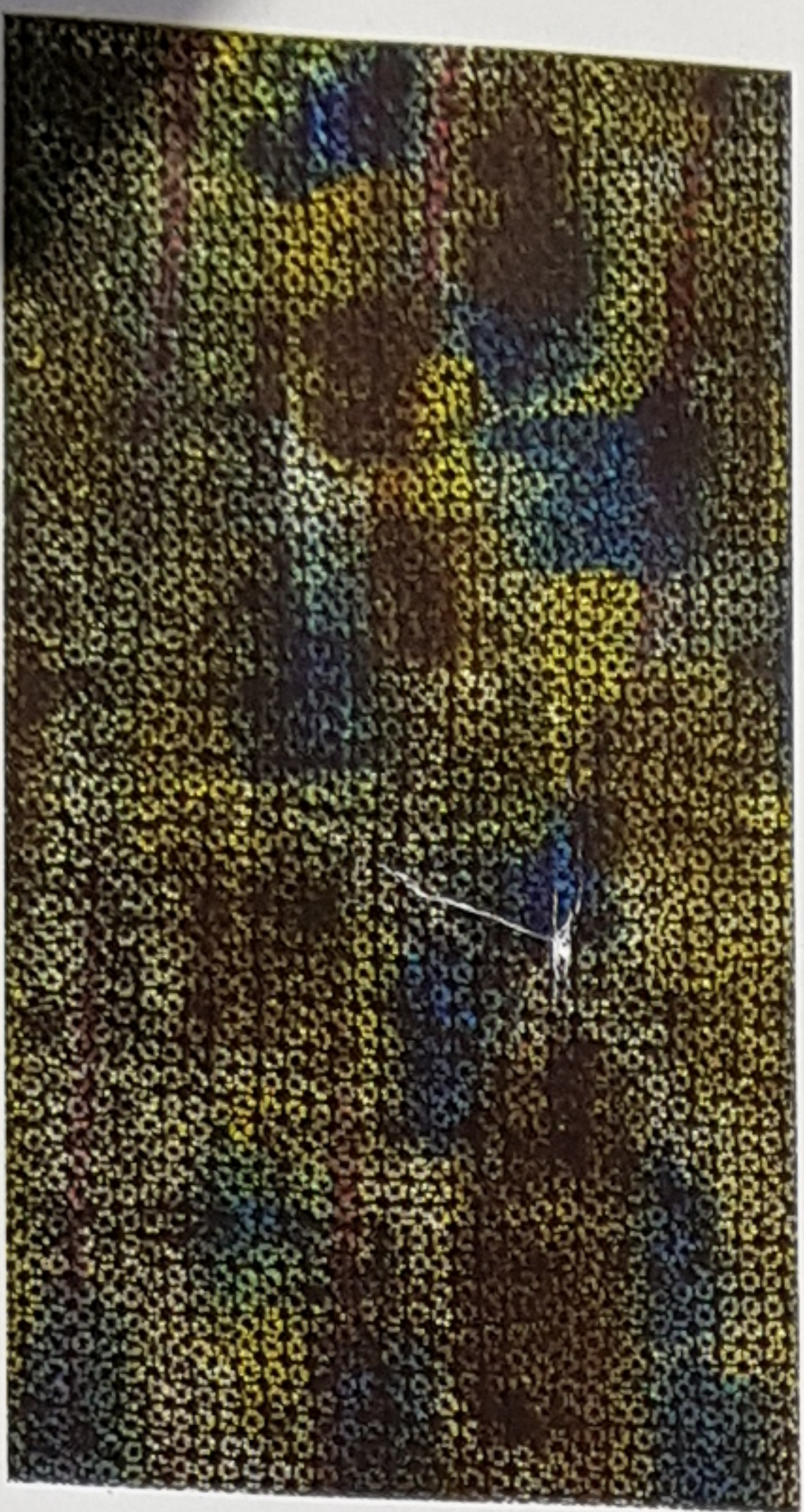
Width/Largeur/Breite/Ancho/Altezza: 137cm / 54"  
Composition/Komposition/Composizione/  
Composición: 100% Co  
Repeat/Raccord/Rapport/Raport/Rapporto: 7cm / 2 3/4"  
Flamcode: B + M  
Martindale: 30,000











## Christian Lacroix

FCL2283/01  
IGUAÇU  
Malachite

Width/Largeur/Breite/Ancho/Altezza: 140cm / 55"  
Composition/Komposition/Composizione/  
Composition: 43% CO 33% VI 24% AC  
Repeat/Raccord/Rapport/Rapport: 112cm / 44"  
Flamcode: B + M  
Martindale: 50,000







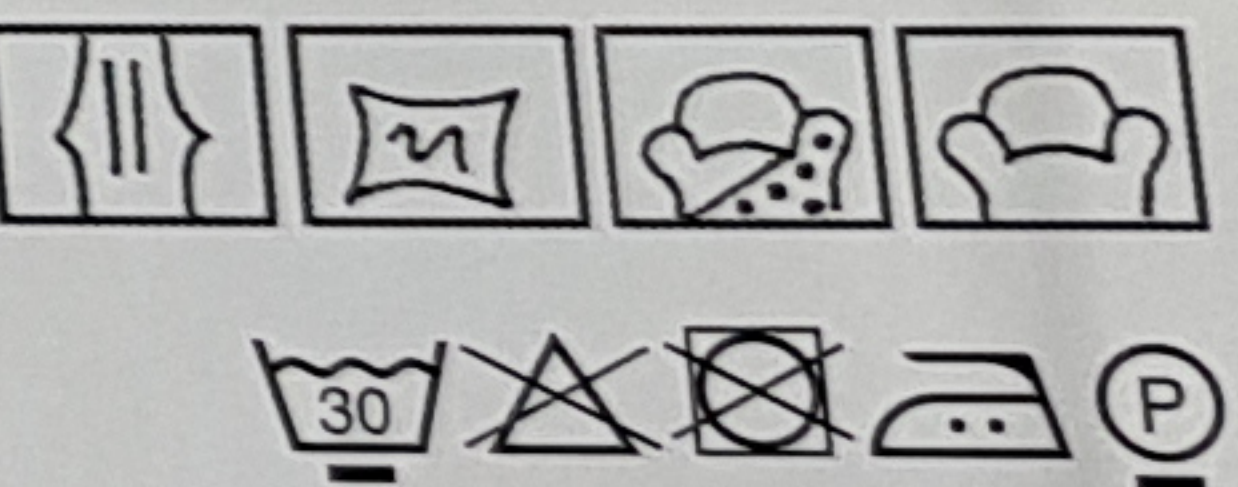




## Christian Lacroix

FCL2276/03  
CANOPY  
Lime

Width/Largeur/Breite/Ancho/Altezza: 137cm / 54"  
Composition/Komposition/Composizione/  
Composición: 100% Co  
Repeat/Raccord/Rapport/Raport/Rapporto: 100cm / 39½"  
Flamcode: B + M  
Martindale: 23,000











FCL 2273/01 Soft Manaos Onyx



FCL 2276/01 Canopy Malachite





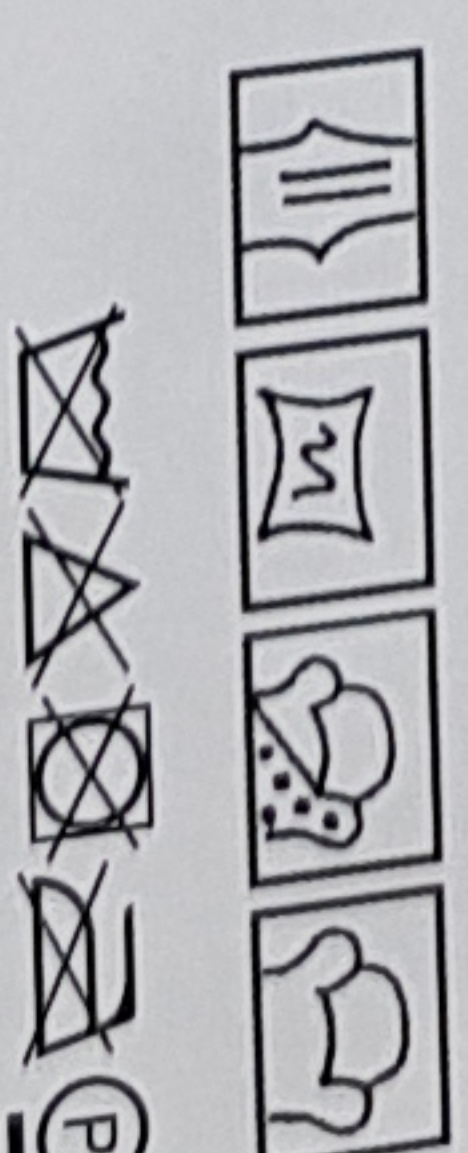




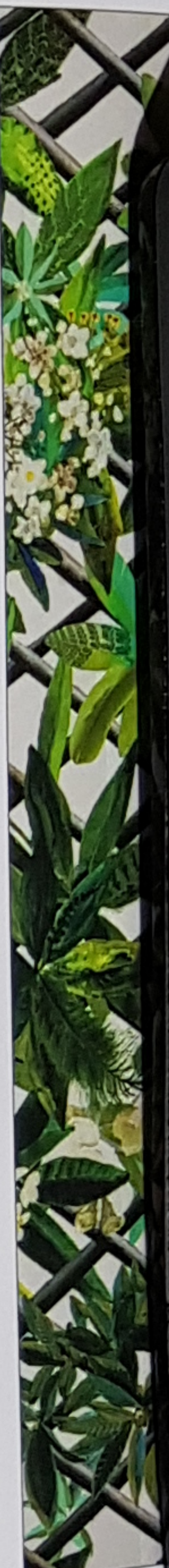
## Christian Lacroix

FCL2273/01  
SOFT MANNAOS  
Onyx

Width/Largueur/Breite/Ancho/Altezza: 137 cm / 54"  
Composition/Komposition/Composizione/  
Compositión: 88% Co 12% Pl  
Repeat/Raccord/Rapport/Rapport: 100cm / 39 1/2"  
Flamcode: B + M  
Martindale: 70,000



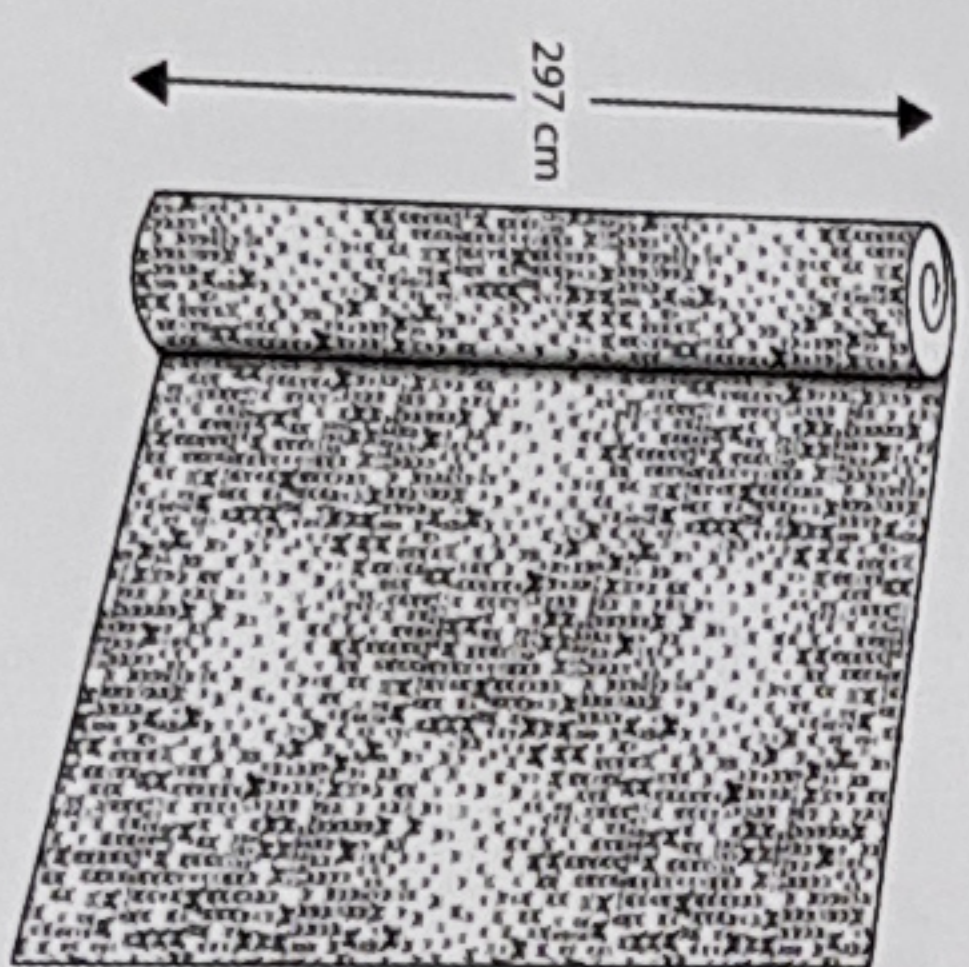
FCL 2276/01 Canopy Malachite







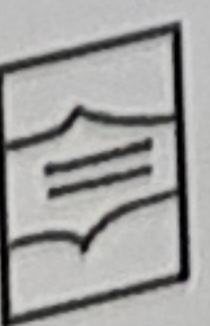




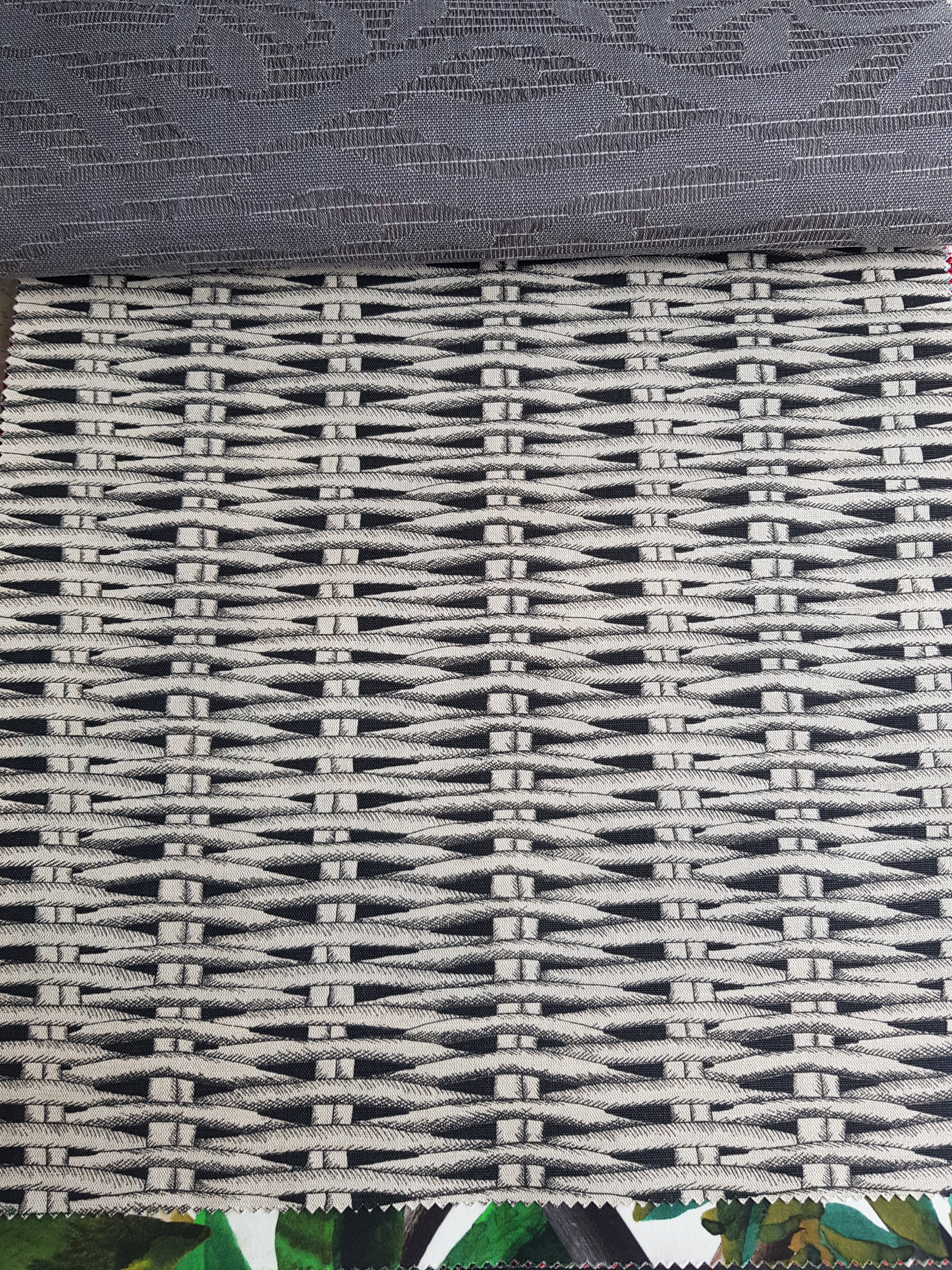
# Christian Lacroix

FCL2281/01  
LIGHT RIO  
Opale

Width/Largeur/Breite/Ancho/Altezza: 297 cm / 117"  
Composition/Kompositioni/Composizione/  
Compositión: 100% LI  
Repeat/Raccordi/Rapport/Raport/Rapporto: 69 cm / 27 1/4"  
Flamcode: Z









# Christian Lacroix

FCL2279/01  
NATURAL BARBADE  
Onyx

Width/Largeur/Breite/Ancho/Altezza: 137 cm / 54"  
Composition/Komposition/Composizione/  
Composición: 49% Li 38% Co 13% Pa  
Repeat/Raccord/Rapport/Raport/Rapporto: 7 cm / 2<sup>3</sup>/<sub>4</sub>"  
Flamcode: B + M  
Martindale: 25,000

